

## Well-being Plan for Gwent 16/02/2023

### Contents

<b>Introduction</b>	3
<b>Public Services Board Membership</b>	4
<b>How our plan was developed</b>	5
Timeline	6
<b>Seven Well-being Goals</b>	8
<b>The Marmot Principles – Building a Fairer Gwent</b>	9
<b>Overarching principles</b>	10
Effectively working together	10
Communication and Engagement	10
Welsh language and culture	10
Performance management	11
<b>Our Well-being Objectives</b>	12
<b>We want to create a fairer, more equitable and inclusive Gwent for all.</b>	12
<b>Steps</b>	14
Take action to reduce the cost of living crisis in the longer term	14
Provide and enable the supply of good quality, affordable, appropriate homes	15
Taking action to reduce our carbon emissions, help Gwent adapt to climate change, and protect and restore our natural environment	16

Take action to address inequities, particularly in relation to health, through the framework of the Marmot Principles.....	17
Enable and support people, neighbourhoods, and communities to be resilient, connected, thriving and safe.....	18
<b>What happens next?</b> .....	19
<b>How the Marmot Principles link to the steps</b> .....	20
<b>Connections with other Partnerships and Plans</b> .....	21
Local Delivery Groups .....	21
Regional Partnership Board (RPB).....	21
Building a Fairer Gwent – a Marmot Region.....	21
Safer Gwent - Community Safety Partnership.....	21
Cardiff Capital Region .....	22
Strategic Corporate Plans.....	22
Area Statements.....	22
Greater Gwent Nature Recovery Action Plan (GGNRAP).....	22
Third Sector Partnership Agreement.....	23
Participatory budgeting.....	23
<b>Appendices</b> .....	24

## Introduction

Welcome to the first Well-being Plan for Gwent, setting out how we are working together to respond to some of the key issues identified in our most recent Well-being Assessment. As part of planning for the next 25 years, and beyond, this five year plan sets out what we will be doing to improve well-being across the region, now and for future generations. Many of the issues we know that affect the well-being of a region will take more than a few months or even years to solve, so the plan has tried to look for longer term solutions which may take a bit longer to show results. There will, of course, be things we can do in the short term, but those will need to help deliver benefits in the years to come.

The Well-being of Future Generations (Wales) Act established Public Services Boards, more commonly known as PSBs, for each local authority area to work together to improve well-being in their area. PSBs are made up of senior leaders from the Local Authority, the Health Board, the Fire and Rescue Service and Natural Resources Wales. A number of other organisations are also invited to join the PSB, such as the Police Service, the Police and Crime Commissioner and the voluntary sector.

In September 2021 the five PSBs in Blaenau Gwent, Caerphilly, Newport, Monmouthshire, and Torfaen came together to form the Gwent PSB, working across the region, and locally. This decision was made to simplify and strengthen the existing partnership arrangements by bringing all the public services together. The move to a regional PSB, with collective responsibility for improving well-being, makes it easier for partners to actively get involved, to add value and avoid doing the same thing several times.

The Well-being Assessment for Gwent, published last year, showed that inequality and deprivation in our communities and the need to take action on the climate and nature emergencies were having an impact on well-being. This Well-being Plan outlines how we, the PSB, will work together to tackle the social, economic, environmental and cultural issues which can affect well-being in Gwent.

## Public Services Board Membership



Gwasanaeth Tân ac Achub  
De Cymru



Mae Landlordiaid Cymdeithasol  
Cofrestredig Gwent yn aelodau o'r  
sefydliad Cartrefi Cymunedol Cymru  
Gwent Registered Social  
Landlords are members of  
Community Housing Cymru



Heddlu  
Gwent  
Police



## How our plan was developed

We used the new Well-being Assessment to identify the issues which had the most effect on well-being, and where we could achieve more by working together than working alone and making better use of the resources we have. This is often known as 'added value'. We identified these issues:

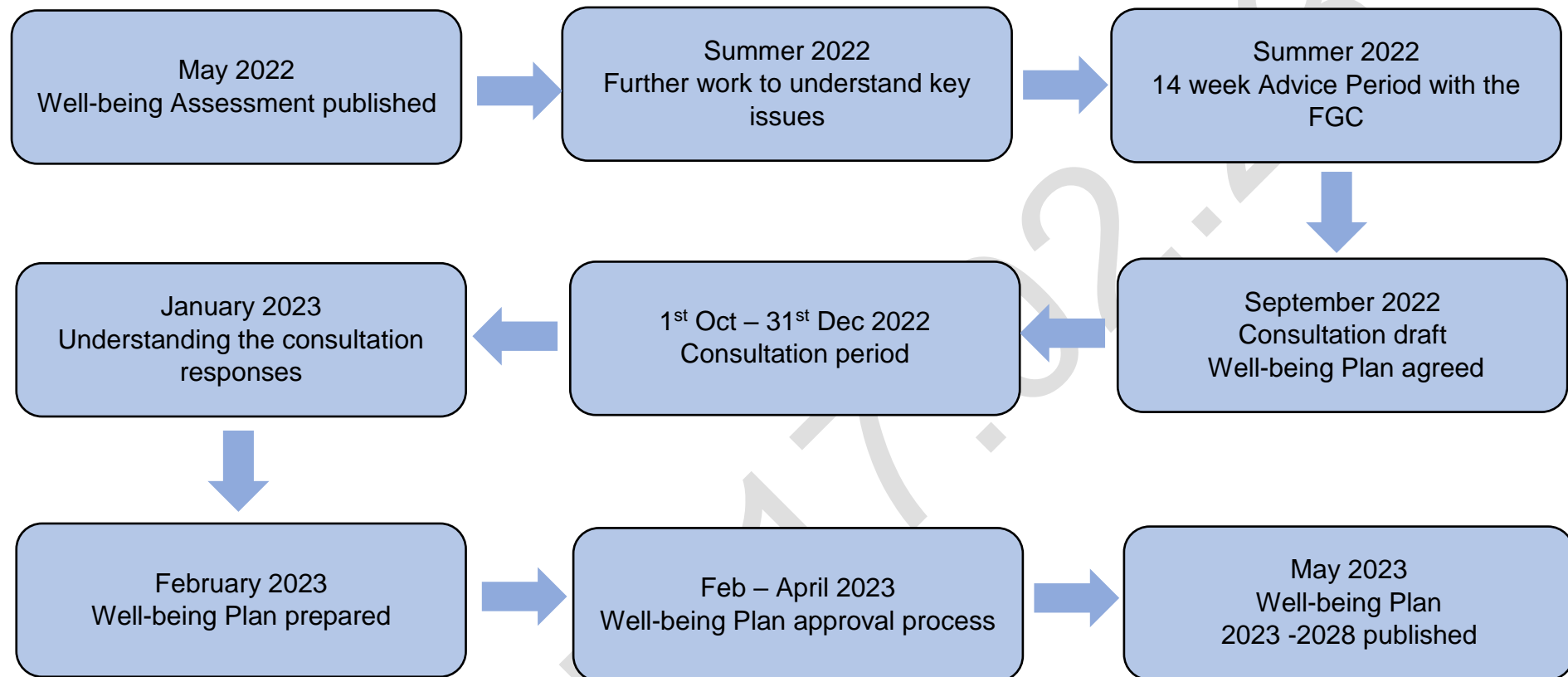
- Health inequalities and well-being (including housing)
- Community cohesion (including community safety and substance misuse)
- Environment (including climate and nature emergencies)

Over the summer of 2022 more work was done to get a better understanding of these issues and how they affected our communities. This involved pulling on a wide range of knowledge and experience, including from the Future Generations Commissioner's office, learning from others and examples of good practice from across Wales and beyond. The Future Generations Report was another source of information about what the future might mean for things like jobs or flooding.

The draft Well-being Plan for Gwent went out for consultation in October 2022. It had three objectives, each with several supporting steps. Full details of the consultation process can be found in Appendix 1. (To come)

Following the consultation the responses were assessed and analysed. The responses came from five sources: the survey, community events, stakeholder events, statutory consultee responses and individual written responses. To understand what the most important issues were for people the issues raised in the consultation were then ranked according to how many of the response sources commented on each one. These became the objectives and steps in this Well-being Plan. We will continue to use the information from the consultation as we develop each step's delivery plan in the Plan as well as continuing to engage communities and groups in our work going forward.

## Timeline



## Five Ways of Working

Just as when we were preparing the Well-being Assessment, we have used the five ways of working, collaboration, integration, involvement, long-term, and prevention, to guide our work. This means that while considering how to improve well-being in our communities now, we've also looked at how well-being could be affected in the future and how we can prevent issues becoming worse. We will need to work together to see what we're each doing in a community and how this affects what we do, individually and in partnership. Finally, but most importantly, we want our communities, professionals, businesses, and others to identify the issues which are most important to them. As we develop how we will be delivering the Objectives and Steps (regional and local delivery plans) we will continue to use these principles to guide our work.



Figure 1: The 5 ways of working from the Well-being of Future Generations Act

## Seven Well-being Goals

The actions in this Well-being Plan must contribute to the Well-being Goals for Wales. Together they show the Wales we'd like for the future and cover all aspects of well-being. Each of the goals are as important as each other, although this plan may do more for one goal than for another.

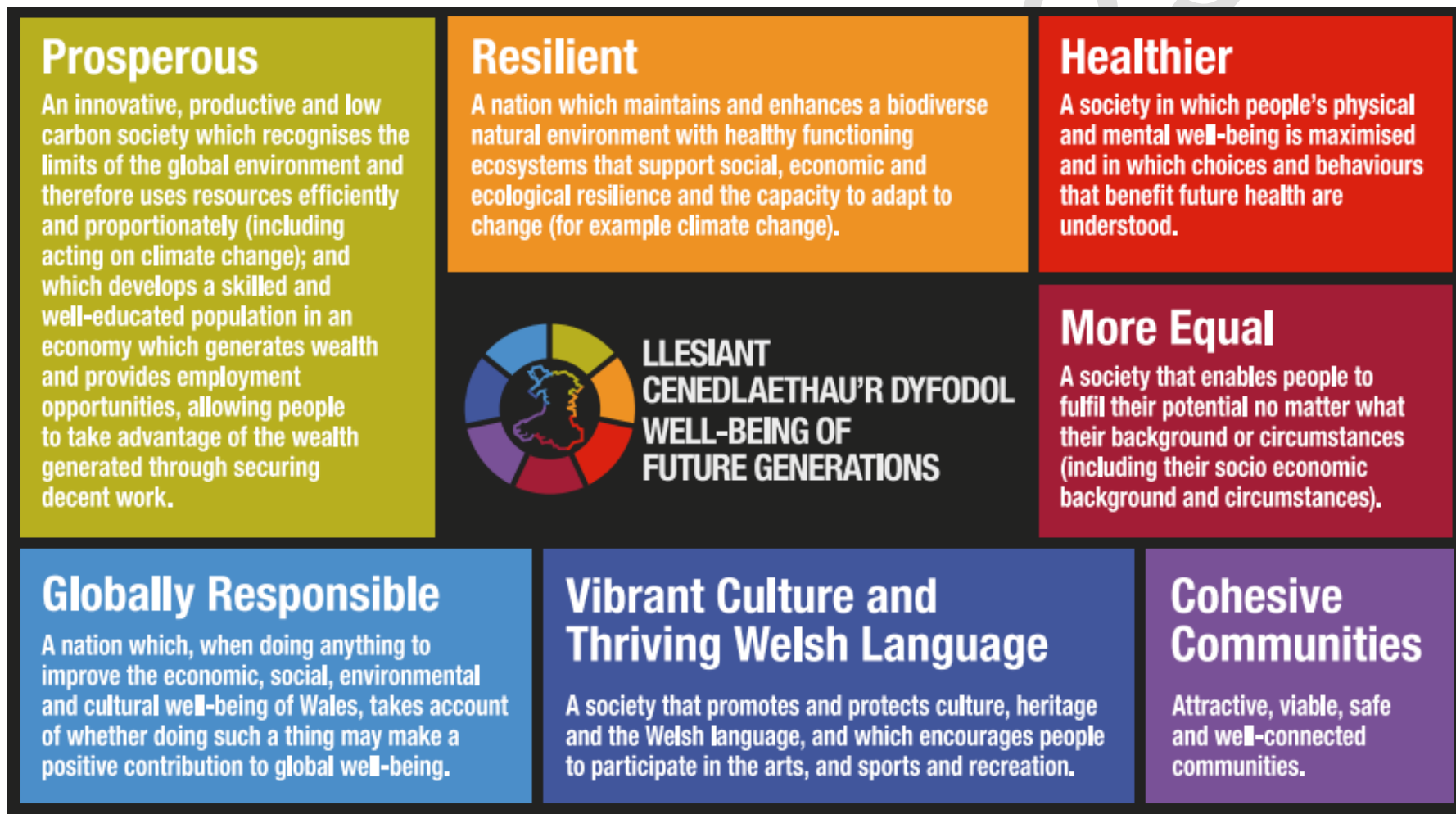


Figure 2: The 7 Well-being Goals from the Well-being of Future Generations Act



## The Marmot Principles – Building a Fairer Gwent

Recognising the inequality that exists in our communities, identified in the Well-being Assessment, the Gwent Public Services Board has agreed to become a 'Marmot region' using this collaborative approach to undertake evidence-based action to reduce inequalities in Gwent.

The Marmot Principles provide a framework to inform the actions to respond to the challenges faced across Gwent. This will re-focus and accelerate progress towards reducing the root causes of health and related inequalities across Gwent. As part of this, the PSB will use the eight Marmot Principles, alongside the Objectives and Steps, to shape the delivery of this Well-being Plan.

### Eight Marmot Principles

1. Give every child the best start in life
2. Enable all children, young people, and adults to maximise their capabilities and have control over their lives
3. Create fair employment and good work for all
4. Ensure a healthy standard of living for all
5. Create and develop healthy and sustainable places and communities
6. Strengthen the role and impact of ill-health prevention
7. Tackle racism, discrimination, and their outcomes
8. Pursue environmental sustainability and health equity together

The Institute of Health Equity is producing a report for the PSB detailing the actions needed to tackle inequity across Gwent. As the delivery plans are developed this report will help to guide our work. The report, Appendix 2, is due to be published in June 2023.



## Overarching principles

As a new PSB we have agreed that there are some things that we would all want to sign up to. These aren't Objectives or Steps but they are the things that will make us work more effectively together and make the positive changes we want for Gwent. They are our Overarching Principles, our ways of working, and reflect the five ways of working in the Well-being of Future Generations Act.

### Effectively working together

Public Services Boards were established to promote better joined up working and a better understanding of how the different organisations contribute to the well-being of an area. We must make sure that what we do isn't making it more difficult for others to do what they need to. We should be sharing knowledge, expertise, and resources whenever possible and avoid doing the same thing many times over. There will be things that are best done by one or two partners, but where working together is the best option, we will do this. This Well-being Plan is about the things we can do better together, the 'added value'.

### Communication and Engagement

While we have been developing the Well-being Assessment and Plan we have tried to engage with people and communities. We know we haven't always been as successful as we would have liked to be, and the Covid-19 restrictions have made it even harder to meet you. As we continue to develop and deliver this plan we want to keep talking with you, to understand your concerns and ideas. We also want to work with our communities, when we can, to create local solutions that contribute to the regional ones.

A full report about the Plan's consultation is available here [\[hyperlink\]](#). If you'd like to be involved in the future, either just to be kept informed, or to be more involved where possible, please contact: [GwentPSB@caerphilly.gov.uk](mailto:GwentPSB@caerphilly.gov.uk)

### Welsh language and culture

*A Wales of Vibrant Culture and Thriving Welsh Language* is one of the goals in the Well-being of Future Generations Act. Each of the seven well-being goals describes an aspect of the Wales we want for the future, and they are all interlinked. The Welsh language forms a part of, and plays a part in all aspects of employment, education, culture, health and social care, community cohesion, the economy and more.

Being able to use the Welsh language is a valuable skill in all parts of life across Wales. It is also a key part of Wales' cultural heritage. Each of the PSB members have a statutory duty to promote the Welsh language, but together we will encourage the increase in the use of Welsh by; using it more with each other, consulting more in Welsh and producing more of our information bilingually, rather than just our main documents.

The PSB organisations are major employers and together we can promote opportunities for our staff and workforce to learn and use the language. Schemes like 'Helo Blod,' can be used by the PSB to promote the Welsh language together as members. The Welsh language is also a central part of the community services such as health, social and primary care. 'More than Just Words' aims to improve the service for social services, health, and social care. The PSB will continue to use media and social media through both languages and look at how else it can encourage the use of the Welsh language in all its activities.

### Performance management

We need to know whether what we're doing is making a difference. We have agreed to have a single 'performance management' process, which will show us how well-being is improving. The indicators will be included in the Step Delivery Plans to make sure that we're looking at the right things. The annual reports will include how much progress we've made against these key measures. The PSB will need to take responsibility for ensuring that we're making the progress we've agreed we need to make.

Because the PSB is all about partnership working, we will also need to share the information we each have around issues. Each of our organisations is collecting data all the time, and there's also research and information coming from universities, Government agencies, the Census and a range of other places. All this information will be useful to the PSB, and the individual member organisations and we need to find a way of being able to share that safely and efficiently.

## Our Well-being Objectives

Using the evidence in the Well-being Assessment, the PSB has identified two interconnecting objectives (what we want to achieve). These will set the direction for our work for the next five years and beyond.

### **We want to create a fairer, more equitable and inclusive Gwent for all.**

The latest Well-being Assessment showed that although our communities are strong with many people feeling connected to their neighbourhoods and proud of their surroundings, the inequalities that exist in our communities have the potential to impact on all aspects of well-being both at a personal and community level. There are also a range of challenges that could potentially widen these inequalities in the future and impact negatively on well-being. People who live in more deprived communities have fewer years of life that are free from ill health and are more likely to have shorter lives. Children from deprived households get poorer school results; limiting their opportunities and increasing the risk that poverty will be passed from one generation to the next. Some people in our communities are experiencing in-work poverty with the amount of spare money they have after paying their bills making it difficult to afford food, transport, energy and to be digitally connected – especially as costs increase.

Many people still feel unsafe, lonely or alone. Widening economic, health, well-being and other inequalities have affected community cohesion, safety and empowerment. The assessment tells us that home ownership is already unaffordable for many low-income households, and as house prices rise more pressure is put on our social housing stock. Future Gwent will also need more housing stock that meets the needs of an ageing population and changing family structures and is resilient to a changing climate.

The Covid-19 pandemic, the cost of living crisis, the UK's exit from the EU, the war in Ukraine, and the increasing impacts of climate change, make the lives, livelihoods, health, safety and well-being of the people of Gwent even more challenging. If action isn't taken, this will lead to poorer health and well-being because of increased deprivation, substance misuse, mental health problems, civil disorder and crime, and antisocial behaviour. Evidence is already showing this will impact the health and well-being of already disadvantaged people and communities the most, who will need additional focus and support.

**We want a climate-ready Gwent, where our environment is valued and protected, benefitting our well-being now and for future generations.**

The latest Well-being Assessment showed that Gwent's countryside, coastline, rivers and urban greenspaces are not all in good condition, Many of our plants and animals are in decline. This drop is, in turn, making it more difficult to deal with challenges such as climate change, poverty and inequality. The 'green economy' could provide jobs in the industries of the future such as renewables, energy efficiency and decarbonisation and supporting good health. Many of the unsustainable approaches that are putting pressure on our natural resources are also causing the climate to change. We need Gwent's natural resources to be resilient to the impacts of a changing climate including more extreme weather events. There will also be challenges associated with transitioning to a low carbon future, and we will need to consider the whole energy system – heat, power and transport. Whilst projections of milder winters associated with a changing climate may help to reduce fuel poverty, we know that much of our housing stock has poor thermal efficiency and will be challenging to retrofit.

For us to enjoy the benefits that nature can provide, our natural areas must be healthy and able to withstand threats and disturbance, such as climate change, urban development and pollution. This will require us all to work differently and really understand how we interact with our environment and the impacts we're having.

To do this we need to change our food, energy and transport systems so they work better for nature and for us, reducing climate change and protecting the resources our future generations will rely on. Developing the 'green economy' could provide local jobs in the industries of the future such as renewables, energy efficient housing and decarbonisation. Increasing the supply of locally grown food is better for nature, our health and reduces pollution. If we change how we travel around Gwent we can reduce carbon emissions, benefit local wildlife and our well-being.

## Steps

We have identified five steps that will help us to achieve our two well-being objectives. Delivery plans for each step explaining what will be done in the short, medium and longer term, who will do it and by when, will be developed during the first year of the plan using the five ways of working as a framework. These will be published as part of the first annual report. Work may begin on delivering some steps before the delivery plans are completed if it can be, especially if we already have the information we need to take action. The delivery plans will be complemented by local action plans at a county level. These will be written by Local Delivery Groups, which mirror the membership of the PSB but at a more local level.

### Take action to reduce the cost of living crisis in the longer term

Although the cost of living crisis began after the Well-being Assessment was completed, we know that it is likely to make the poverty, deprivation and inequity in our communities worse and can increase crime and antisocial behaviour. Voluntary and community groups, councils and others are already providing support to many and will continue to do what they can.

While dealing with the immediate issues we must make sure that what we do now doesn't make things even harder in the future. The right training and skills will enable people to get decent work with pay that helps them to provide for their families. The growth in local renewable energy production and use, could provide better jobs, a cleaner environment and potentially cheaper energy for everyone. The need to make our homes and businesses more energy efficient and better insulated, will offer opportunities for local social enterprises and traditional businesses.

Technological changes will mean that services can be provided differently, as we saw during the pandemic, with services provided virtually or closer to home, offering alternative travel options and reducing pollution. We will need to make sure that any changes in the way people access services is designed around their needs and uses new technology to support those. Local food production will help people be able to eat healthy, more affordable food as well as providing opportunities to share their knowledge, and failures, with others. More local food production also helps to reduce the impact on the environment and is less prone to supply disruption.

Links to the other steps



Homes



Environment



Health



Communities

Contribution to the national Well-being Goals

Prosperous	Resilient	Healthier	Equal	Cohesive	Culture & Language	Global

## Provide and enable the supply of good quality, affordable, appropriate homes

Having a home is central to a person's well-being. It means they can get a job, an education, the help and support they may need and allows them to feel part of a community or neighbourhood. Homes can be owned by the person living in them, rented from the council, a housing association, or a private landlord. How many homes are rented or owned is different across the region, as are the costs of buying or renting a home. The Well-being Assessment showed that the average house price in Monmouthshire is around three times that in Blaenau Gwent. Being able to afford to pay the rent or mortgage is only part of the story.

The cost of living in that home has also been increasing and many homes could be much more energy efficient, tackling both climate change and fuel poverty. As Wales moves towards being carbon neutral the need to make homes more energy efficient and better insulated is becoming more important. Insulating homes should help people to stay healthier for longer, help to reduce energy use and therefore costs, provide good quality local jobs as well as helping to protect the natural environment around the world.

Homes need to be in the right place to support individuals and the community, with access to local shops, workplaces, schools, health care, cultural and leisure activities, and transport. We know that as the climate changes there are likely to be more floods, storms, heatwaves and other weather events and homes need to be able to cope with those. Communities are changing, with more blended families, older people and people living alone, so housing needs to be adaptable and suitable for those changes.

The consultation showed that having good quality, affordable housing was an important issue for our communities. How housing is provided is very different across the region. The PSB wants to work together to improve the quality of homes in Gwent, but it will take some time to identify work we can do together because of the different rules and funding available to the different organisations.

### Links to other steps



Cost of living



Environment



Health



Communities

### Contribution to the national Well-being Goals

Prosperous	Resilient	Healthier	Equal	Cohesive	Culture & Language	Global

## Taking action to reduce our carbon emissions, help Gwent adapt to climate change, and protect and restore our natural environment

Protecting the environment for future generations is one of the greatest challenges of our time. The land, air, water, trees, plants, animals, and insects provide us with everything we need to live. However, our need for new homes and workplaces, renewable energy, recreation, and food production are putting nature under pressure. Without a healthy environment across Gwent there can be no well-being benefits for our communities.

The effects of climate change are being felt in our communities through flooding and heat waves. The Welsh public sector is committed to become carbon neutral by 2030. We must reduce Gwent's carbon emissions by increasing our use of renewable and sustainable energy sources, increasing availability of local food, reducing waste, and changing how we travel around Gwent. We want to support our communities to adapt to the impacts of climate change, recognising that some communities are more exposed to floods, heatwaves, air pollution and other climate risks to health.

We need to better manage the demands on Gwent's natural environment and protect, connect and restore nature. We'll support community green/blue space initiatives which bring communities together, especially in areas of Gwent which have least access to local, quality outdoor spaces for health and well-being. Whilst focusing on the immediate needs across Gwent, we'll also ensure our decisions consider future trends, and don't make things even harder for future generations.

### Links to other steps



Cost of living



Health



Homes



Communities

### Contribution to the national Well-being Goals

Prosperous	Resilient	Healthier	Equal	Cohesive	Culture & Language	Global



### Take action to address inequities, particularly in relation to health, through the framework of the Marmot Principles

People's health and well-being is affected by many things, clean air, water, and food, being able to get decent work, a suitable home, having local shops, access to culture and leisure activities, a quality education, good transport and social networks as well as health information and care. Where someone lives and how much money they have impacts on their health and happiness, it can lead to poorer health and less opportunity to thrive in life.

The Gwent PSB has agreed to use the framework of the eight Marmot Principles, developed by Prof. Sir Michael Marmot and his team at the Institute of Health Equity, which focus on the central issues that affect fairness, health and well-being. This approach will help to identify how to address the root causes of poor health and inequity across Gwent. The Institute of Health Equity is writing a report, using the evidence from the Well-being Assessment, the consultation responses, and their experience of working in other areas across the UK, to make recommendations for how the Gwent PSB and other regional partnerships, can take action to reduce inequities across Gwent. This report will form the basis of the action plan for this step.

#### Links to other steps



Cost of living



Environment



Homes



Communities

#### Contribution to the national Well-being Goals

Prosperous	Resilient	Healthier	Equal	Cohesive	Culture & Language	Global

## Enable and support people, neighbourhoods, and communities to be resilient, connected, thriving and safe

During the Covid-19 pandemic, communities across Gwent pulled together to support each other in times of need. But the cost of living crisis and the war in Ukraine have made existing inequities and poverty worse, with crime and antisocial behaviour increasing as people find life harder. We also know that there are some people, or communities, living in the region that don't feel as welcome, safe, or supported as they should. This could be because they are old, sick, at risk from flooding, domestic violence, drug misuse or racism. Many of these issues have been there for decades, with poor housing, health, and jobs, making it harder for people to improve their well-being.

Thriving communities need safe, affordable, suitable homes, access to sports, leisure, and cultural activities, with opportunities to get involved through paid work or volunteering, and in the language of their choice. There are historical buildings and areas across Gwent that could be used as community resources for local arts programmes and other activities, providing an opportunity to promote and share knowledge about the local heritage, history, and culture.

Communities need decent, reliable transport that enables people to access services, get to decent work, attend events, or visit family and friends, safely, cheaply and in a low carbon way. The beautiful countryside provides the space for exercise and recreation for people of all ages, benefiting their physical and mental health and providing opportunities to reduce the effects of extreme weather events, caused by a changing climate.

### Links to other steps



Cost of living



Environment



Health



Homes

### Contribution to the national Well-being Goals

Prosperous	Resilient	Healthier	Equal	Cohesive	Culture & Language	Global

## What happens next?

During the first year of this Plan we will be preparing detailed delivery plans at a regional and local level. Working with our Local Delivery Groups, other partnerships, communities, Community Councils, voluntary groups, and others, we will get a better understanding of what needs to be done and how best to do it. These delivery plans will form the basis of the first annual report, along with updates. There may be things we can do in the short term, such as finding out more about how something similar has been done before or declaring a nature emergency or promoting fair pay within our organisations. But we must make sure that these support our long-term objectives and the steps we have identified.

## How the Marmot Principles link to the steps

	Cost of living	Housing	Environment	Health equity	Community
Give every child the best start in life	✓	✓	✓	✓	✓
Enable all children, young people, and adults to maximise their capabilities and have control over their lives	✓			✓	✓
Create fair employment and good work for all	✓	✓	✓	✓	✓
Ensure a healthy standard of living for all	✓	✓	✓	✓	
Create and develop healthy and sustainable places and communities	✓	✓	✓	✓	✓
Strengthen the role and impact of ill-health prevention	✓	✓		✓	✓
Tackle racism, discrimination, and their outcomes					✓
Pursue environmental sustainability and health equity together	✓	✓	✓		

## Connections with other Partnerships and Plans

Across the Gwent region, and beyond, there are a number of other partnerships and initiatives which will make a difference to people and rather than repeat what these groups are doing, the Gwent PSB will look to work with them to deliver its objectives for Gwent.

### Local Delivery Groups

In each of the local authority areas which make up the Gwent region, Local Delivery Groups (LDGs) have been set up to deliver the PSB's objectives at the local level. Their membership is similar to that of the PSB, with additional local representation. Activity to deliver the objectives may look different in different areas and the LDGs will be able to better connect with and draw on local expertise and groups to provide a local flavour. In time these groups may want to deliver their own action plans creating a link between local and regional priorities and action.

### Regional Partnership Board (RPB)

The Gwent RPB brings together the health board, local authorities and the voluntary sector to ensure effective services, and care and support is in place to best meet the needs of the people of Gwent. The priority areas they need to work on are services for: older people with complex needs and long-term conditions, including dementia; people with learning disabilities; carers, including young carers; Integrated Family Support Services; children with complex needs due to disability or illness. The RPB must write a Population Needs Assessment and an Area Plan. These complement the Well-being Assessment and this Well-being Plan. The PSB will support the work of the RPB, and they will support our work, but we will make sure that we're not duplicating each other's work.

### Building a Fairer Gwent – a Marmot Region

A Marmot Region is a network of local stakeholders committed to tackling inequity through action on the social determinants of health – the social and economic conditions which shape our health with action framed within eight principles. Becoming a Marmot Region demonstrates that we want to work together at a senior level to improve equity across Gwent, and improve the lives of all our communities.

### Safer Gwent - Community Safety Partnership

Safer Gwent, is a regional multi-agency Community Safety Partnership (CSP), made up of statutory bodies under the Crime & Disorder Act, and wider partners who have a key role in addressing the community safety portfolio. Safer Gwent aims to carry out, on behalf of the Gwent PSB, the oversight of regional community safety issues and quality assure the coordination of regional activity to support local CSP delivery. In addition, Safer Gwent is uniquely positioned to take forward the Gwent PSB community safety & cohesion priorities, whilst ensuring that the PSB is fully cited on and able to respond to issues identified within the annual community safety strategic assessment.

## Cardiff Capital Region

The Cardiff Capital Region (CCR) is a collaborative partnership comprising the ten Local Authorities that make up South East Wales and represents almost half the population of Wales. The CCR delivers a wide range of regeneration and investment projects, managed by a dedicated team and a ring-fenced £1.2bn investment fund, through the Cardiff Capital Region City Deal, which aims to deliver 25,000 new jobs and generate an additional £4bn of private sector investment by 2036. The CCR's high-profile projects include: the £50m Innovation Investment Capital fund, supporting business to scale up; the £50m Sites and Premises Fund, developing new sites to support the delivery of their Industrial and Economic Plan; the £10m Challenge Fund, supporting Local Authority innovation to accelerate decarbonisation and transform communities; the Homes for the Region programme to deliver 2,800 new homes; and several Metro projects transforming public transport infrastructure across the region.

## Strategic Corporate Plans

These are the plans each of the organisations that make up the PSB have for what they are going to do over the next 3 – 5 years. These have different names in different organisations but they all set the high level direction for that organisation including their own Well-being Objectives which need to align to those of the PSB.

## Area Statements

The South East Wales Area Statement (SEAS) informs internal and external planning across Gwent and helps stakeholders (including the PSB) consider different ways of working together.

The Area Statement process helps explore and shape aspirational ways of working. It has 4 themes: Linking Our Landscapes, Climate Ready Gwent, Healthy Active Connected and Ways of Working. The collaborative actions identified under each theme are underpinned by best available evidence, local knowledge and understanding gathered throughout the development of the SEAS. The outcomes under each of the four strategic themes will deliver the Area Statement vision for South East. This vision has been developed collaboratively over the course of the Area Statement process and is underpinned by what specialists and wider stakeholders want to see in Gwent.

## Greater Gwent Nature Recovery Action Plan (GGNRAP)

The GGNRAP is a strategic framework, aiming to halt and reverse negative biodiversity trends, aligning national policy and legislation, informed by evidence including the Greater Gwent State of Nature Report 2020 Greater-Gwent-State-of-Nature-4-002.pdf (monlife.co.uk), the South East Wales Area Statement and Gwent Well-being Assessments. It is intended to be used by public bodies and organisations which operate at a regional level across the Greater Gwent area, including those on the Gwent PSB, to support better involvement that drives positive change and collaborative action together, long term. It is also a guide for the Local Nature Recovery Action Plans which focus more on local action to promote biodiversity in each Local Nature Partnership area found within Gwent.

### Third Sector Partnership Agreement

The Third Sector Partnership Agreement between the Gwent PSB and the wider third sector recognises the mutual benefits that can be gained from close co-operation between the statutory partners and third sector across the Gwent PSB landscape. It builds on previous local versions and sets out guidelines for how all parties should work together. Partnership Agreements with the third sector have been identified by Welsh Government as good practice.

### Participatory budgeting

Funding has been made available to the five Gwent Local Authorities to lead participatory budgeting programmes in their areas. The authorities are currently at different stages of development and with differing levels of investment. Some local authorities have now completed one or more programmes. Initial feedback has suggested participatory budgeting is effective in distributing funding to community groups, can help achieve wellbeing objectives, can generate high levels of participation and is well received. Public Health Wales are leading a review of participatory budgeting undertaken across Gwent, to inform and improve future use of this approach.

## Appendices

**Appendix 1** Consultation and engagement – chapter

**Appendix 2** Marmot Report

**Appendix 3** RPB Area Plan

**Appendix 4** PSBs in Gwent's Well-being Objectives 2018 – 2023



## Appendix 4

### PSBs in Gwent's Well-being Objectives 2018 – 2023

<b>Blaenau Gwent PSB</b>	<b>Caerphilly PSB</b>	<b>Newport PSB</b>	<b>Monmouthshire PSB</b>	<b>Torfaen PSB</b>
Blaenau Gwent wants to forge new pathways to prosperity	Positive Change -a shared commitment to improving the way we work together	People feel part of their community and have a sense of belonging	Respond to the challenges associated with demographic change.	Develop a functional, connected network of natural areas that support the current and future well-being needs of local populations
Blaenau Gwent wants everyone to have the best start to life.	Positive Start- giving our future generations the best start in life	Provide children and young people with the best possible start in life	Provide Children and young people with the best start in life.	Provide children and young people with the best possible start in life.
Blaenau Gwent wants safe and friendly communities.	Positive People-empowering and enabling all our residents to achieve their own potential.	Ensuring people feel safe in their communities.		Create safe, confident communities and promote community cohesion
Blaenau Gwent wants to encourage and enable people to make healthy lifestyle choices in places that they live, learn, work and play.	Positive Places-enabling our communities to be resilient and sustainable	Long and healthy lives for all		Support healthy lifestyles and enable people to age well.
Blaenau Gwent wants to look after and protect its natural environment.		Newport has a clean and safe environment for people to use and enjoy.	Protect and enhance resilience of our natural environment whilst mitigating and adapting to the impact of climate change.	Develop mitigation and adaptation responses to the impacts of climate change
		Improve the perceptions of Newport		Tackle the intergenerational patterns

		as a place to live, work, visit and invest		of poverty and develop economic resilience.
		Drive up skill levels for economic and social well-being.	Develop opportunities for communities and businesses to be part of an economically thriving and well-connected county.	Improve local skills through work-force planning, training, apprenticeships, and volunteering opportunities.
		People feel part of their community and have a sense of belonging		
		Participation in arts, heritage and history is important for people's well-being		
		Improve air quality across the city		
		Communities are resilient to climate change		
		Participation in sports and physical activity is important for people's well-being		
		People have access to stable homes in a sustainable supportive community		